

NOTES

JCM is a registered trademark of JCM American Corporation. All other product names mentioned herein may be registered trademarks or trademarks of their respective companies. Furthermore, ™, ® and © are not always mentioned in each case throughout this publication.



For the Americas, E-mail: support@jcmglobal.com
 For the UK, Ireland, Europe, Middle East, Africa & Russia, E-mail: support@jcmglobal.eu
 For Asia & Oceania, E-mail: asiastupport@jcmglobal.com

**Operator
Guide**



ICB® Asset Ticket Generator

Software Installation and Operation

This document contains information for downloading, installing, and configuring the JCM ICB® Asset Ticket Generator software application. This application is designed to create Asset Number Tickets and Enable/Disable Tickets used to configure UBA® or iVIZION® Series Acceptor Units for use with the JCM ICB® (Intelligent Cashbox) System. Tickets can be created via manual input into the JCM ICB Asset Ticket Generator application, or by loading a properly-formatted .csv file.

The following software and hardware components are required for use with the JCM ICB Asset Ticket Generator application:


- Software component:
 - JCM ICB Asset Ticket Generator Software Application
 -  Contact JCM Customer Service at (800) 683-7248 for this application.
- Hardware components:
 - JCM GEN5™ CouponXpress™ Printer Station with Firmware 5RUSAGE21.dfu installed
 - OR**
 - JCM GEN2U™ CouponXpress™ Printer Station with Firmware GUR001213.dfu installed
 - Personal Computer (PC) equipped with the Windows® 7, Windows 8, or Windows 10 Operating System

Figure 1 illustrates typical hardware component connections required when using the JCM ICB Asset Ticket Generator software application.

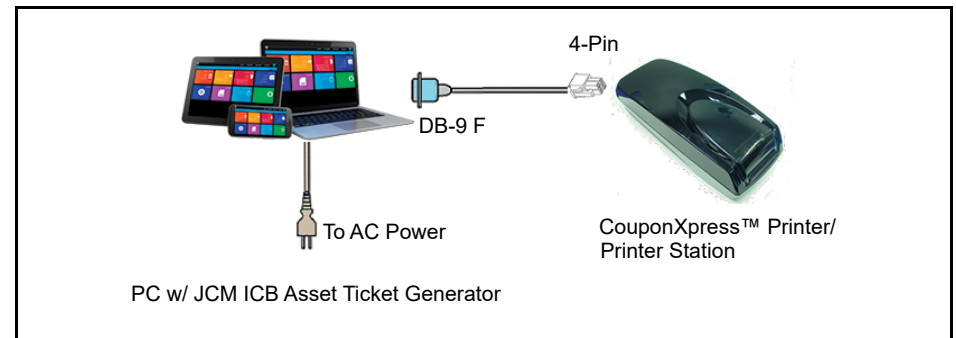


Figure 1 Typical JCM ICB Asset Ticket Generator Hardware Interconnections

INTRODUCTION



NOTE: The JCM ICB Asset Ticket Generator application and/or the information in this Guide may be updated, and are subject to change without notice.

The JCM ICB Asset Ticket Generator Application is used to create Asset Number, Enable and Disable Tickets (as described below) to configure UBA® or iVIZION® Banknote Acceptors for use with the Intelligent Cash Box (ICB) System:

- The Asset Number Ticket is used to set the Asset Number of the Banknote Acceptor to match the Asset Number of the host EGM in which the Banknote Acceptor is installed.
- The Enable Ticket is used to turn ON (activate) ICB in the UBA or iVIZION Banknote Acceptor Unit.
- The Disable Ticket is used to turn OFF (deactivate) ICB when the UBA or iVIZION Banknote Acceptor Unit is removed from the EGM.

The JCM ICB Asset Ticket Generator Application is Windows 7®, Windows 8® and Windows 10® compatible. For information on obtaining the Application and the proper GEN5/GEN2U Printer Firmware version, contact JCM Customer Service at (800) 683-7248 or support@jcmglobal.com.

PROGRAM INSTALLATION AND PRINTER STATION PREPARATION

Perform the following steps to install the JCM ICB Asset Ticket Generator Application onto your PC:

1. Obtain the required JCM ICB Asset Ticket Generator application from JCM Customer Service.
2. Save the application to a File Folder on the PC.

JCM ICB ASSET TICKET GENERATOR SOFTWARE INSTALLATION

To install the JCM ICB Asset Ticket Generator Application, proceed as follows:

1. Open the file folder where the JCM ICB Asset Ticket Generator Application is stored on the PC.
2. Extract the files contained within the compressed (.zip) File.
3. Double-click on "Setup."

NOTES

NOTES

4. Follow the onscreen prompts to complete the installation.

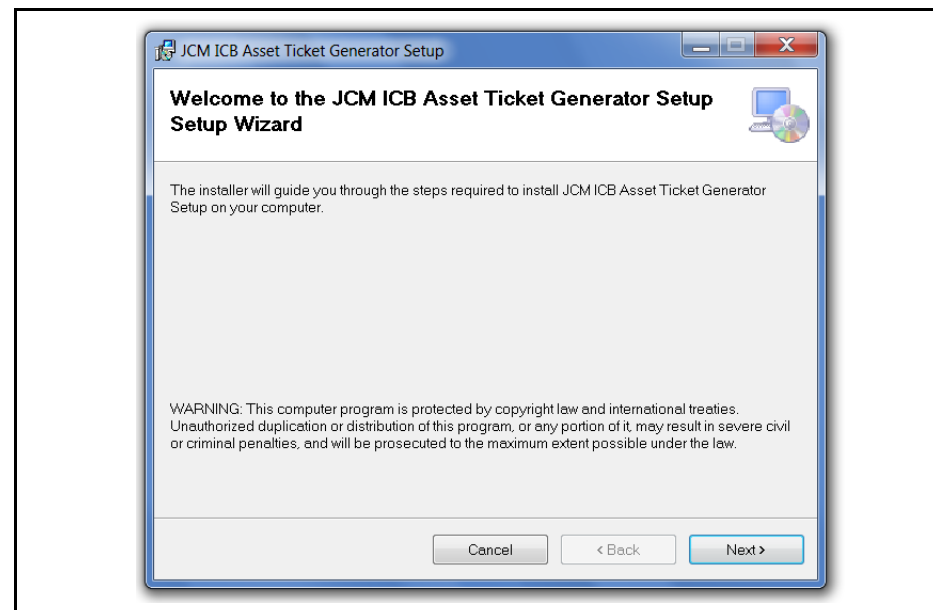


Figure 2 JCM ICB Asset Ticket Generator Setup Wizard

JCM GEN5/GEN2U PRINTER PREPARATION



NOTE: To function properly with the JCM ICB Asset Ticket Generator Application:

- The GEN5 Printer must have Firmware Version 5RUSAGE21.dfu installed.
- The GEN2U Printer must have Firmware Version GUR001213.dfu installed.

To update the firmware in the GEN5 or GEN2U Printers, refer to the GEN5 or GEN2U Operation and Maintenance Manual, available at www.jcmglobal.com. To access the manuals, click on the Support tab>Downloads>Product Manuals.

To use the GEN5/GEN2U Printer Station with the JCM ICB Asset Ticket Generator Application, proceed as follows:

1. Connect the GEN5/GEN2U Printer Station to a Serial Port on the PC. If a PC Serial Port is not available, a USB-to-Serial adapter can be used.
2. Apply power to the GEN5/GEN2U Printer Station.

LAUNCHING THE JCM ICB ASSET TICKET GENERATOR APPLICATION

To launch the JCM ICB Asset Ticket Generator Application, proceed as follows:

1. Click the Start Button in the PC's Windows Taskbar, then click All Programs.
2. Scroll to the JCM Folder, then click JCM ICB Asset Ticket Generator.


 **NOTE:** To create a Desktop Shortcut for easier access, right-click on JCM ICB Asset Ticket Generator, then click Send To... and choose Desktop (create shortcut).



Figure 3 JCM ICB Asset Ticket Generator Shortcut icon

The JCM ICB Asset Ticket Generator user interface is displayed (Figure 4).

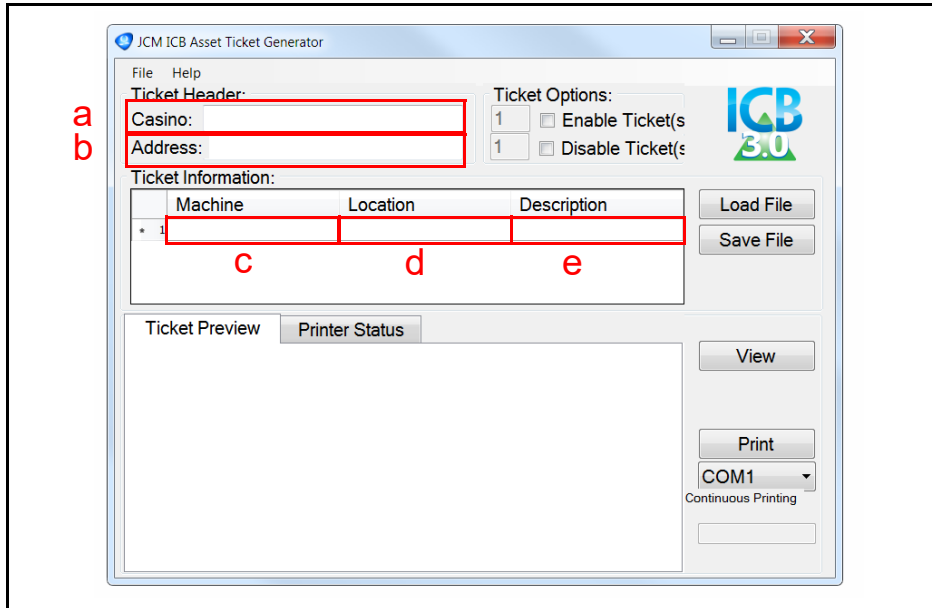


Figure 4 JCM ICB Asset Ticket Generator User Interface

PARTS LIST

Typical hardware components required for use with the JCM ICB Asset Ticket Generator Software Application are shown below.

Table 1 Required Hardware Components

Part Number	Description
701-000275R	Kit, ICB GEN5 CouponXpress Printer Station
302-100004R	Adapter, USB-Serial, SIIG
150-00198-100	Cable, Printer to PC (included with Printer Station above)
950-100056R	Paper, Ticket, Fanfold, JCM
JU-H40911-S1	USB 2.0 4-Port Hub, SIIG

SAMPLE TICKETS

Sample Tickets printed by the JCM ICB Asset Ticket Generator Application appear in Figure 11 and Figure 12 below.



Figure 11 Sample JCM ICB Asset Number Ticket 1



Figure 12 Sample JCM ICB Asset Number Ticket 2

 NOTE: Printed Tickets may appear slightly different than shown in the sample images.

JCM ICB ASSET TICKET GENERATOR FUNCTIONS

Functions available using the ICB Asset Ticket Generator application include:

TICKET HEADER

- Casino (Figure 4 a) - Enter the Property Name
- Address (Figure 4 b) - Enter the Property Address



NOTE: The Property Name and Address will print on top of the Asset, Enable or Disable Ticket - see Sample Tickets (Figure 11 and Figure 12) on page 12.

TICKET INFORMATION

- Machine (Figure 4 c) - Enter the Machine or Asset Number
- Location (Figure 4 d) - Enter the EGM's physical Floor Location
- Description (Figure 4 e) - Enter a description of the EGM



NOTE: The Machine Number and Location information will print on the Ticket - see Sample Tickets (Figure 11 and Figure 12) on page 12. Description information does not print on the Ticket.

- To create **Single Asset Number Tickets**, enter the Machine (Asset) Number, Location (optional) and Description (optional) information in the Ticket Information window. Enter each individual Asset Number in a single Input Line.



NOTE: A new Input Line is automatically created when an Asset Number is entered.

- To create **Multiple Sequential Asset Number Tickets**, enter a hyphen (-) between the starting and ending Machine (Asset) Numbers in the Machine field (Ticket Information window). As an example:
To print Asset Number Tickets for Machine Numbers 123, 124, 125 and 126, Enter the following in the Machine field: 123-126



NOTE: For more information on entering Asset (Machine No.) Tickets, click **Help** (Figure 5 a), then View Help for details on entering Asset Numbers.

TICKET OPTIONS

- If Enable Tickets or Disable Tickets are needed, click the checkbox to select Enable Ticket(s) (Figure 5 b), Disable Ticket(s) (Figure 5 c) or both.
- To print multiple Enable Tickets or Disable Tickets (default=1), enter specific quantities in the Quantity selection fields (Figure 5 d).
- If only Enable Tickets or Disable Tickets are needed, leave the Machine (Asset) Ticket Information field blank when printing.

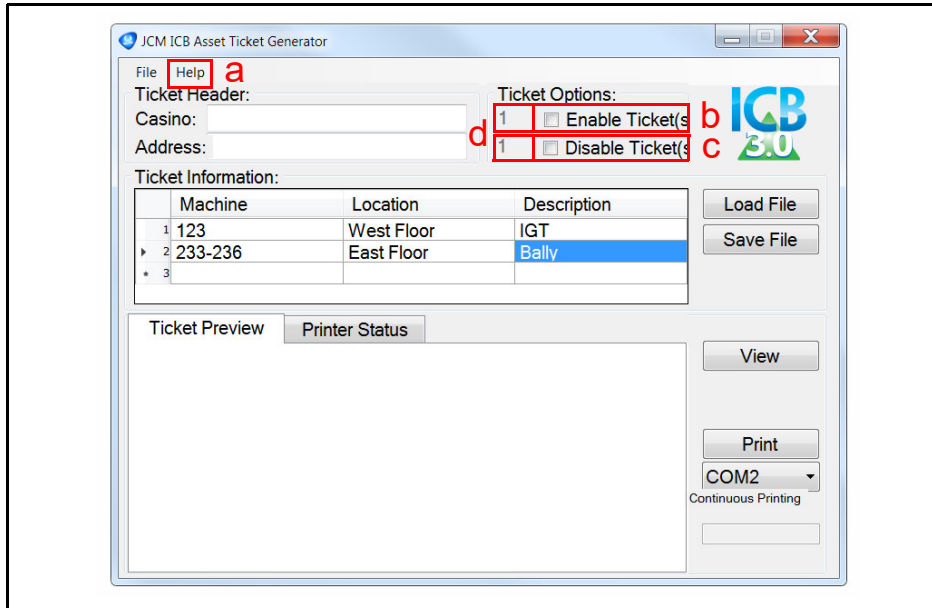


Figure 5 JCM ICB Asset Ticket Generator User Interface

SAVING TICKET INFORMATION

If Ticket Information has been manually entered into the JCM ICB Asset Ticket Generator Application, the inputted data can be saved as an Excel .CSV file for future use. To do so:

1. Click the "Save File" Screen Button (Figure 10 a).
2. From the Save As window, enter a name for the file, then click "Save."

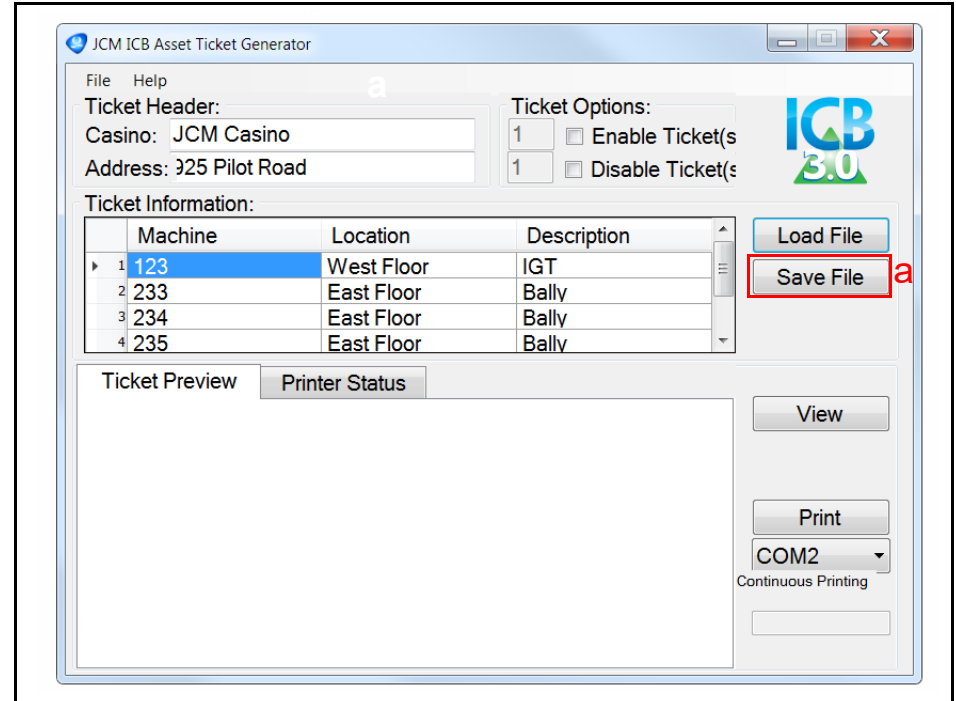



Figure 10 Saving Ticket Information as a .CSV File (example)

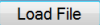
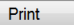
CREATING A BLANK CSV FORM

To create a blank .CSV form:

1. Open the JCM ICB Asset Ticket Generator Application.
2. Leave all fields blank (empty).
3. Click the "Save File"  Screen Button (Figure 9 a).
4. In the browser's Save As window, specify the desired location where the file should be saved.

A properly-formatted Excel .CSV file (ICBAssetTicket.csv) is created (Figure 8).

To import an Excel .CSV file:

1. Click the "Load File"  Screen Button (Figure 9 b).
2. Use the Browser window to select the Excel .CSV formatted file to load into the JCM Asset Ticket Generator Application.
3. To print Machine Number Tickets from the .CSV file using the GEN5/GEN2U Printer, click the "Print"  Screen Button (Figure 9 c).

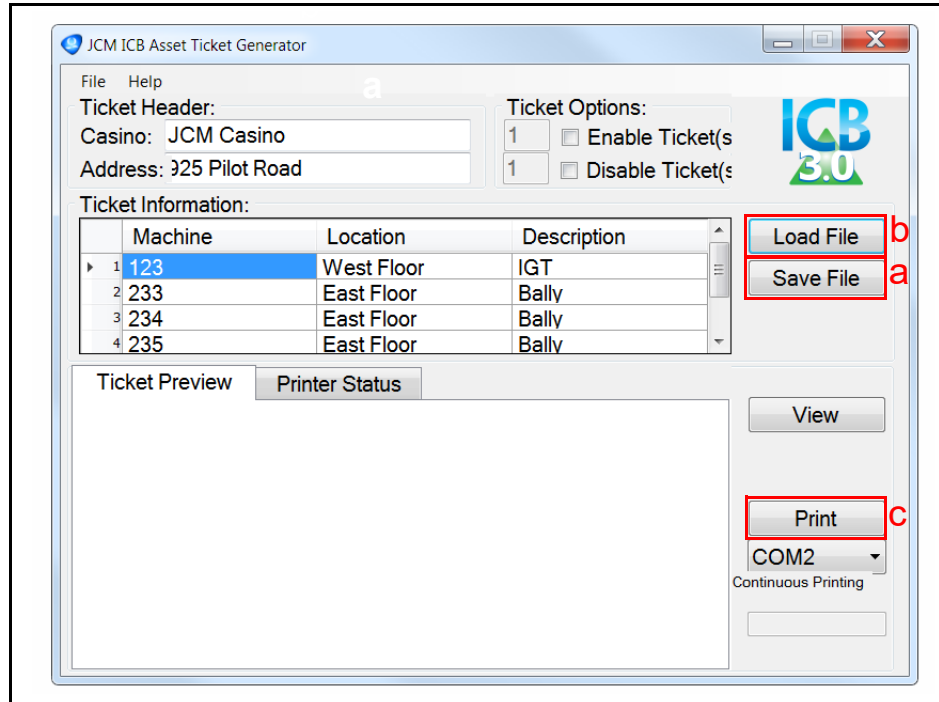


Figure 9 Importing a .CSV File (example)


TICKET PRINTING METHODS



NOTE: Some printers may be preset to reduce the image size. For best results, make sure that the printer is set to Actual Size or printing at 100%.

Print Using a PDF File

To print Asset Tickets, Enable Tickets and Disable Tickets from an Office Printer using a .pdf file:

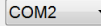
1. Click the "View"  Screen Button (Figure 6 a).
A .pdf file of the Tickets is displayed.
2. Select the PC's Print option to send the .pdf file to a Printer.
3. Trim the Ticket printout along the black outlines.



NOTE: The first Ticket to be printed will appear in the Ticket Preview display (Figure 6 b).

Print Using a GEN5/GEN2U Printer

To print Asset Tickets, Enable Tickets and Disable Tickets using a GEN5/GEN2U Printer:

1. Make sure the GEN5/GEN2U Printer is connected to the PC.
2. Click the "COM" Port  drop-down menu to select the proper COM Port setting for the GEN5/GEN2U Printer (Figure 6 c).



NOTE: The default value for printing Multiple Tickets is "Continuous Printing" (Figure 6 d) - all Tickets will be printed without stopping.

3. Click the "Print"  Screen Button (Figure 6 e).

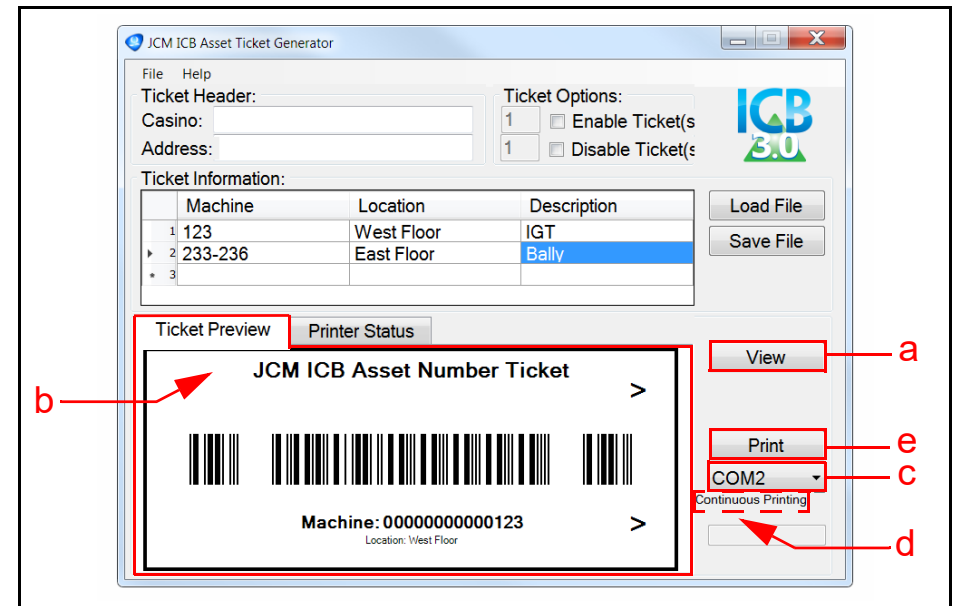


Figure 6 Printing a JCM ICB Asset Number Ticket

PRINTER STATUS

The Printer Status appears in the Printer Status display (Figure 7 a). The Print Job progress will also appear as an alternating Text message and GREEN Progress Bar (Figure 7 b).

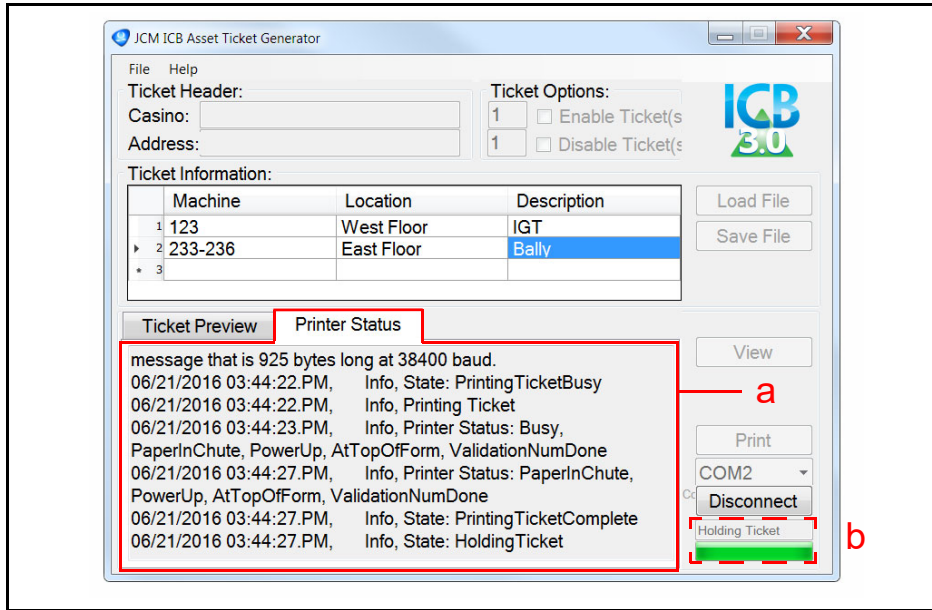


Figure 7 Printer Status Display (Print Job Progress)

IMPORTING MACHINE NUMBERS AND LOCATIONS

Machine Numbers and Location Information can be imported into the JCM ICB Asset Number Ticket Generator Application, using a properly formatted Excel file, saved as a .CSV (Comma Separated Variable) file.

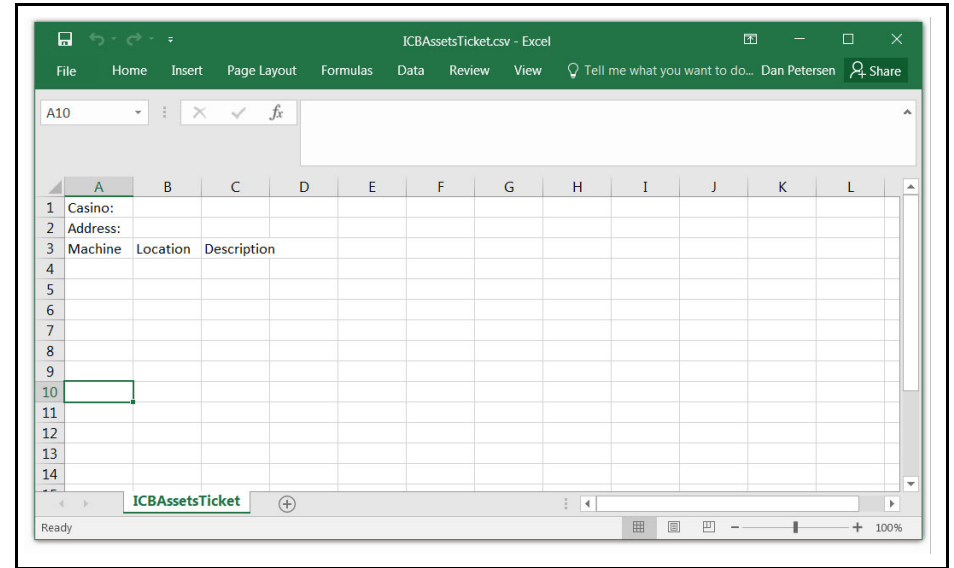


Figure 8 Importing Machine Numbers as an Excel File (.CSV Format)